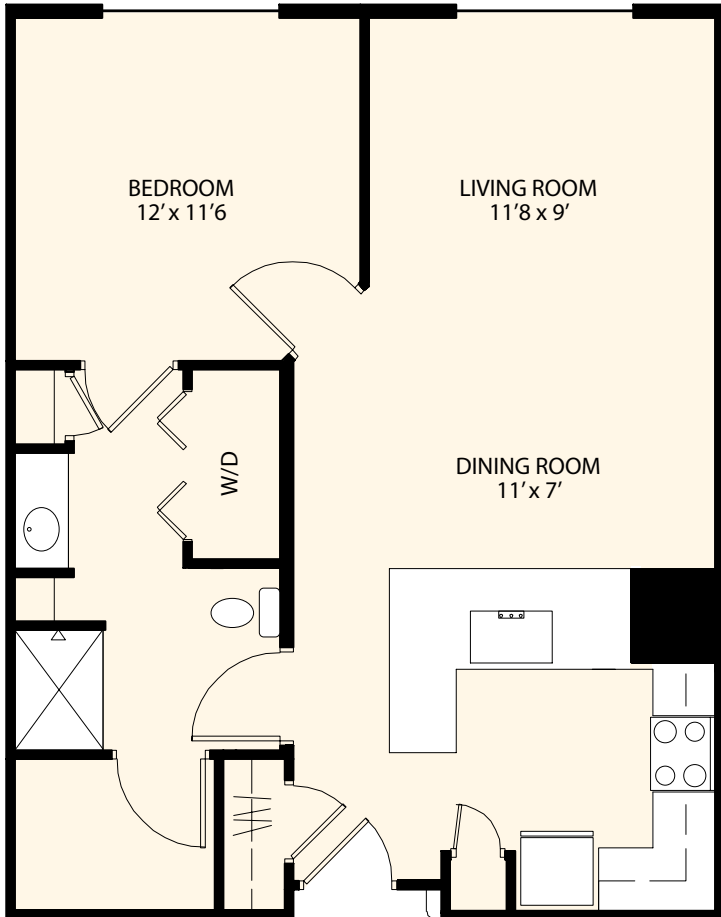




Cherry

One Bedroom One Bath Home



752 Total Square Footage
all sizes are approximate



Features and Benefits

Open Living Design
Entertainment Serving Bar
Granite Countertops
Beautiful Mahogany Kitchen Cabinetry
Butler's Pantry
Double Basin Kitchen Sinks
Microwave
Black Energy Star Appliance Package
Full-size Washer/Dryer Connections
Walk-in Closet
Foyer Closet
Linen Closet
Walk-in Shower
Bathing Tub *
Oversized Showers with Grab Bars *
Ceiling Fans
Pre-wired for High-Speed Internet, Cable TV
Central Heating and Air Conditioning
Wall-to-Wall Carpeting
9 Foot Ceilings
Energy Efficient Windows
All Electric
Emergency Call System
Fire/Smoke Detectors and Sprinklers

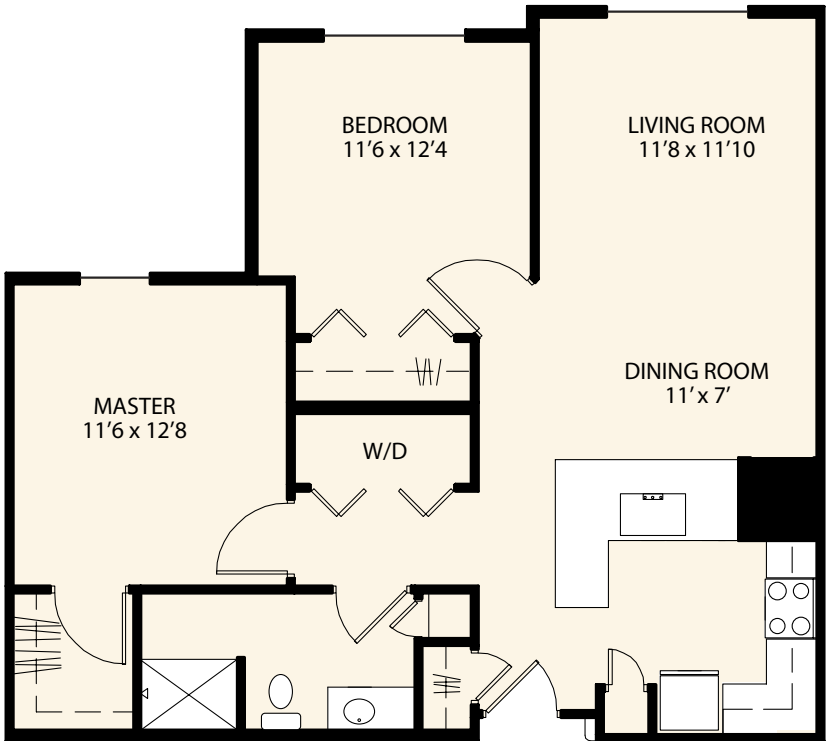
* *in select apartments*





Magnolia

Two Bedroom One Bath Home



942 Total Square Footage
all sizes are approximate



Features and Benefits

Open Living Design
Entertainment Serving Bar
Granite Countertops
Beautiful Mahogany Kitchen Cabinetry
Butler's Pantry
Double Basin Kitchen Sinks
Microwave
Black Energy Star Appliance Package
Full-size Washer/Dryer Connections
Walk-in Closet
Foyer Closet
Linen Closet
Walk-in Shower
Bathing Tub *
Oversized Showers with Grab Bars *
Ceiling Fans
Pre-wired for High-Speed Internet, Cable TV
Central Heating and Air Conditioning
Wall-to-Wall Carpeting
9 Foot Ceilings
Energy Efficient Windows
All Electric
Emergency Call System
Fire/Smoke Detectors and Sprinklers

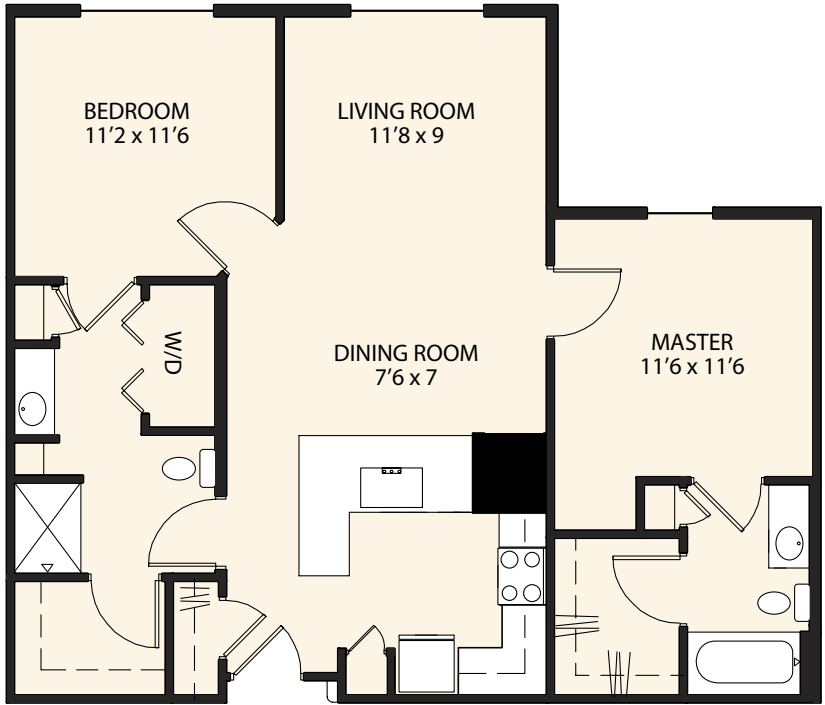
* *in select apartments*





Dogwood

Two Bedroom Two Bath Home



1014 Total Square Footage
all sizes are approximate



Features and Benefits

Open Living Design
Entertainment Serving Bar
Granite Countertops
Beautiful Mahogany Kitchen Cabinetry
Butler's Pantry
Double Basin Kitchen Sinks
Microwave
Black Energy Star Appliance Package
Full-size Washer/Dryer Connections
Walk-in Closet
Foyer Closet
Linen Closet
Walk-in Shower
Bathing Tub *
Oversized Showers with Grab Bars *
Ceiling Fans
Pre-wired for High-Speed Internet, Cable TV
Central Heating and Air Conditioning
Wall-to-Wall Carpeting
9 Foot Ceilings
Energy Efficient Windows
All Electric
Emergency Call System
Fire/Smoke Detectors and Sprinklers

* *in select apartments*

