

HEARTHSIDE

Johns Creek



*Beautifully appointed 1 & 2 Bedroom Apartment
Homes for Active Adults aged 62 & better!*

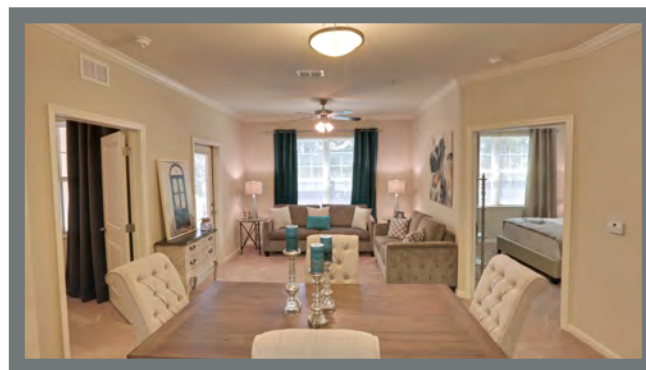
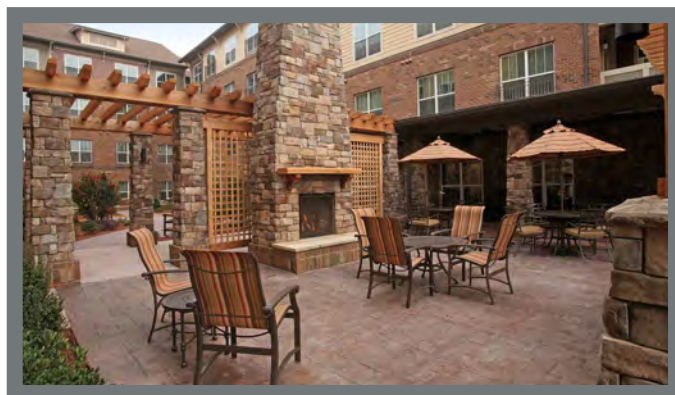
APARTMENT FEATURES

- ✓ 9-Foot ceilings
- ✓ Spacious closets
- ✓ Open kitchen with pantry
- ✓ Energy Star appliances
- ✓ Microwave
- ✓ Step-In Shower
- ✓ Large Walk-In Closets
- ✓ Full-Size W/D Connections

COMMUNITY AMENITIES

- ✓ HearthSide Lounge w/ Fireplace
- ✓ Fitness Studio
- ✓ Library
- ✓ Grilling Stations & Outdoor Seating Areas
- ✓ Community Gardens
- ✓ Media Room
- ✓ Art Studio

770-418-0555



Application Fee	\$35 (per applicant)
Security Deposit	\$350
Pet Deposit	\$350



A OneStreet Residential Community

HEARTHSIDE *Johns Creek*

The Cherry

1 BR/1 BA 752* SF
*SF is approximate



Artist renderings are approximate and not meant to be exact representations of unit. Drawings may not be to scale. Not all features are available in all units.

Open Living Design
Entertainment Serving Bar
Granite Countertops *
Stainless Steel Appliances *
Butler's Pantry
Double Basin Kitchen Sink

9' Ceilings
Ceiling Fans
Linen Closet
Step-In Shower
Garden Tub *
Oversized Showers

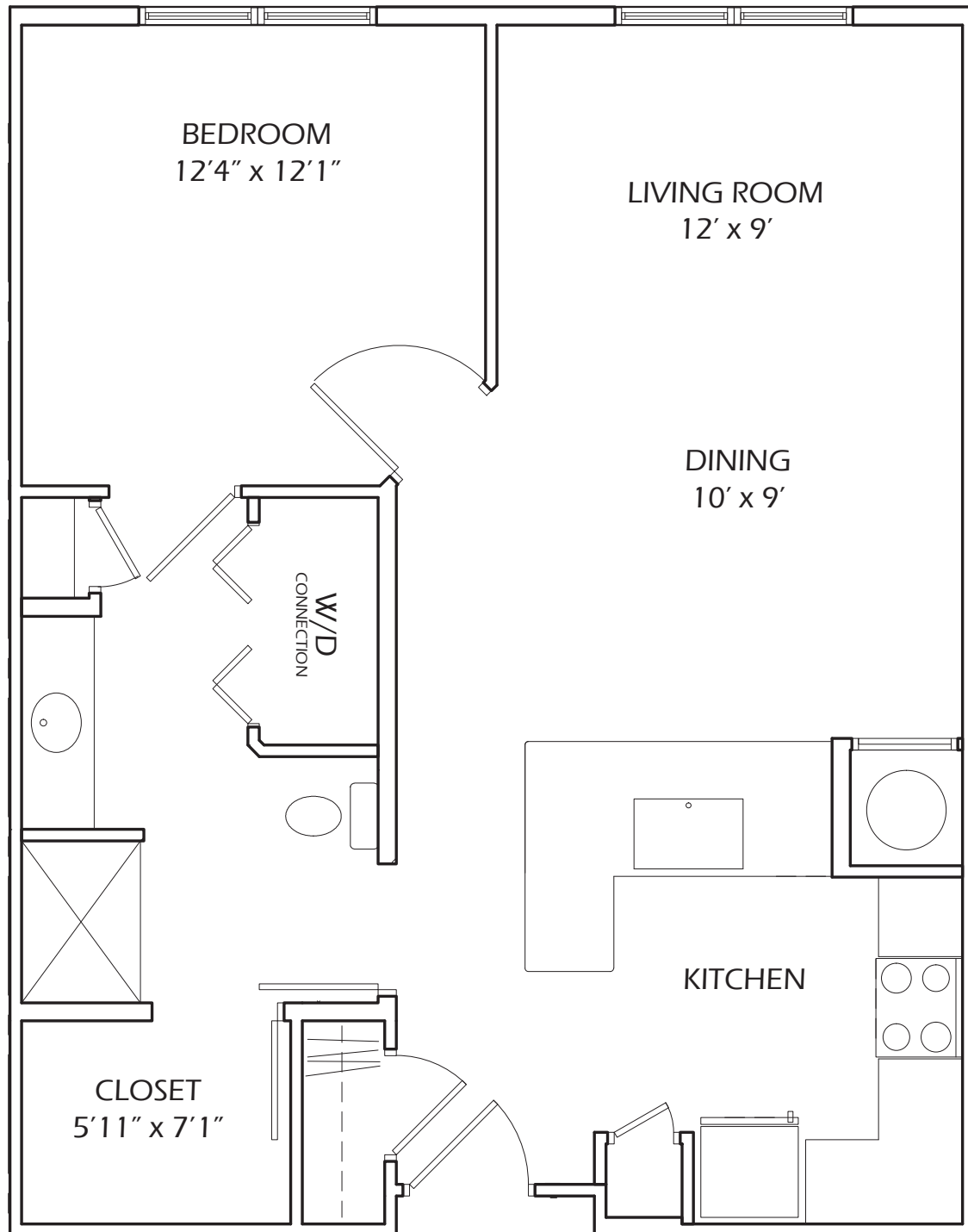
Full-Size W/D Connections
Large Walk-In Master Closet
Internet & Cable Ready
Microwave
Energy Star Appliance Package
* in select apartments

HEARTHSTONE

Johns Creek

The
Cherry

1 BR/1 BA 752* SF
* SF is approximate



HEARTHSTONE *Johns Creek*

The Magnolia

2 BR/1 BA 942* SF
* SF is approximate



Artist renderings are approximate and not meant to be exact representations of unit. Drawings may not be to scale. Not all features are available in all units.

Open Living Design
Entertainment Serving Bar
Granite Countertops *
Stainless Steel Appliances *
Butler's Pantry
Double Basin Kitchen Sink

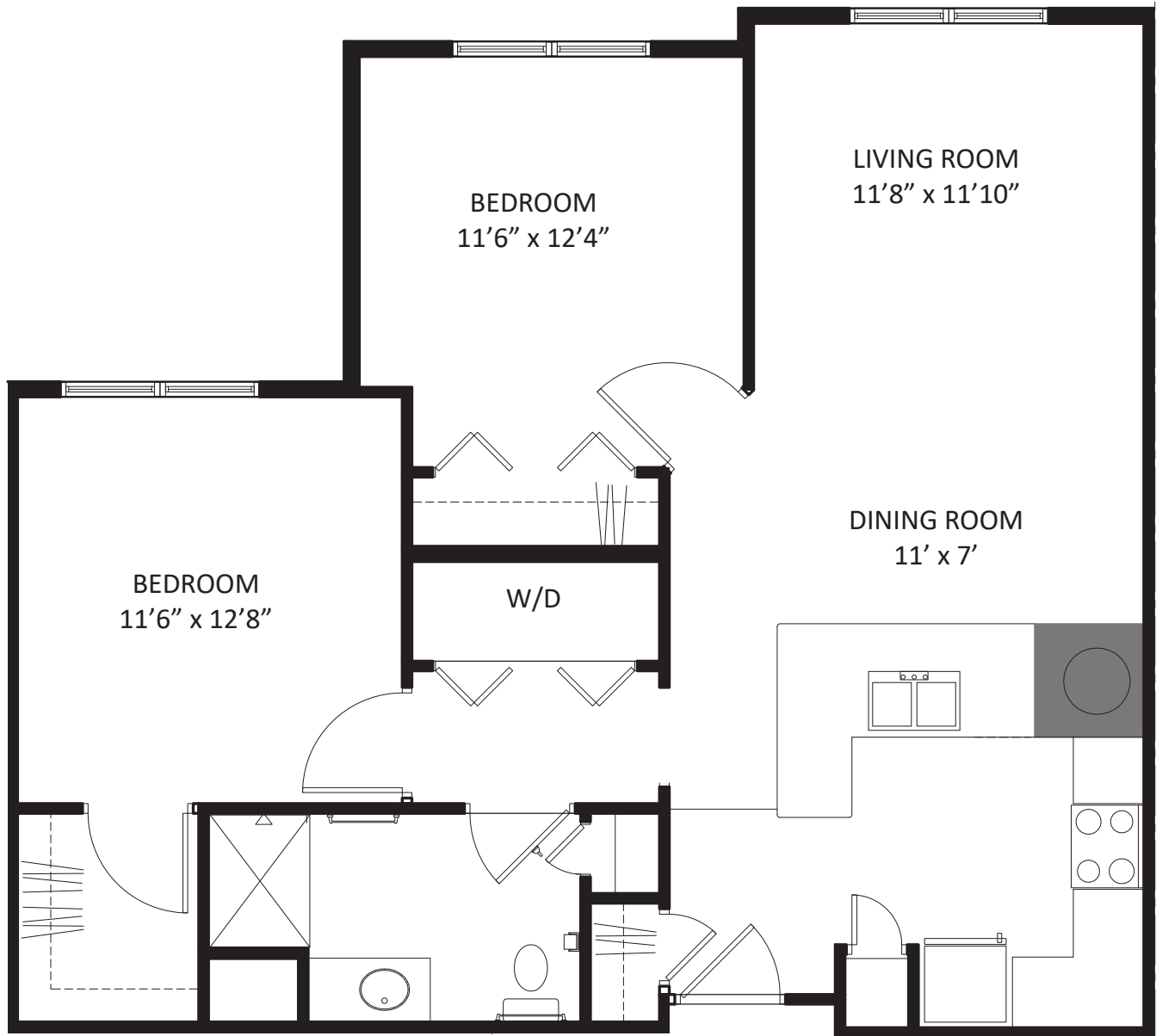
9' Ceilings
Ceiling Fans
Linen Closet
Step-In Shower
Garden Tub *
Oversized Showers

Full-Size W/D Connections
Large Walk-In Master Closet
Internet & Cable Ready
Microwave
Energy Star Appliance Package
* in select apartments

HEARTHSTONE *Johns Creek*

The Magnolia

2 BR/1 BA 942* SF
*SF is approximate



HEARTHSTONE *Johns Creek*

The Dogwood

2 BR/2 BA 1,015* SF
* SF is approximate



Artist renderings are approximate and not meant to be exact representations of unit. Drawings may not be to scale. Not all features are available in all units.

Open Living Design
Entertainment Serving Bar
Granite Countertops *
Stainless Steel Appliances *
Butler's Pantry
Double Basin Kitchen Sink

9' Ceilings
Ceiling Fans
Linen Closet
Step-In Shower
Garden Tub *
Oversized Showers

Full-Size W/D Connections
Large Walk-In Master Closet
Internet & Cable Ready
Microwave
Energy Star Appliance Package
* in select apartments



HEARTH SIDE

Johns Creek

The Dogwood

2 BR/2 BA 1,015* SF
*SF is approximate

